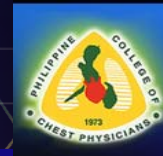




**This is a
smoke-free
convention!**



17th PCCP
MID-YEAR CONVENTION



**State-of-the-Art
Pulmonology**
CONVERGENCE OF PRACTICE



August 6 and 7, 2014 · Crowne Plaza Manila Galleria · Quezon City,
Philippines



The theme for the 17th Midyear Convention of the Philippine College of Chest Physicians (PCCP) and Educational Seminar of the Asian Pacific Society of Respirology (ESAP) is “State of the Art Pulmonology: Convergence of Practice”.

In the last decade alone, the medical community has witnessed the development and advancement of technology and science in leaps and bounds, and these have benefitted our profession in a variety of ways. From the invention of high-tech machines, the formulation of new drugs, to the rejuvenation of old knowledge and to making all these accessible through gadgets and applications. All these relatively new tools have made the practice of medicine more current and more able to cope with the constantly evolving medical field, especially in the field of the respiratory medicine.

In 2015, the community should be prepared for ASEAN integration. This will further enhance the medical profession, erasing borders through the exchange of expertise and valuable information. And with all the advances in technology, all of these innovations and knowledge are simply at your fingertips.



Salmeterol +
Fluticasone propionate
Seretide®



IBA
IBA ANG MAY DOSE COUNTER
IBA ANG SIGURADO¹



Seretide® is the **FIRST** and **ONLY**²
Metered Dose Inhaler (MDI Device)
with a DOSE COUNTER

Look for the
Pink dose
counter label



¹ Bush, K. R., Wasserman, W. R., Linnott, N. W., Lovato, J., Garcia-Rose, and C. Cox. "Fluticasone Propionate/ Salmeterol Hydrofluoride as Metered-Dose Inhaler with Integrated Dose Counter." *International Journal of Clinical Practice* 63 (10) (2008): 1218-224. © 2008 The Philippines, printed on the

**Salmeterol + Fluticasone propionate
Seretide® Metered Dose Inhaler**

INDICATIONS
Seretide® is indicated for the treatment of asthma (variable asthma) and chronic obstructive pulmonary disease (COPD) in patients who require long-term maintenance therapy.

CONTRAINDICATIONS
Seretide® is contraindicated in patients with a history of hypersensitivity to any of the ingredients.

WARNINGS AND PRECAUTIONS
Seretide® is a combination of a long-acting beta₂-agonist and a corticosteroid. Patients should be warned of the risks associated with the use of these drugs. Seretide® should be used with caution in patients with known or suspected cardiovascular disease, hypertension, diabetes mellitus, glaucoma, or hyperthyroidism. Seretide® should be used with caution in patients with known or suspected infection, including tuberculosis, because of the risk of reactivation of the infection.

ADVERSE EFFECTS
The most common adverse effects reported in clinical trials were headache, sore throat, and cough. Other adverse effects include: increased heart rate, tremor, nervousness, dizziness, muscle aches, and difficulty breathing. Seretide® may cause an increase in blood pressure and heart rate. Seretide® may also cause an increase in the risk of developing cataracts and glaucoma.

DRUG INTERACTIONS
Seretide® may interact with other drugs, including beta-blockers, diuretics, and antiarrhythmics. Seretide® may also interact with grapefruit juice, which can increase the levels of the drug in the blood.

PHARMACOLOGY
Seretide® is a combination of a long-acting beta₂-agonist (salmeterol) and a corticosteroid (fluticasone propionate). Salmeterol acts by relaxing the muscles of the airways, while fluticasone propionate acts by reducing inflammation in the airways.

PHARMACOKINETICS
Seretide® is rapidly absorbed after inhalation. The peak plasma concentration is reached within 1-2 hours. The drug is primarily metabolized in the liver and is excreted in the urine.

The Philippine College of Chest Physicians
with
The Asian Pacific Society of Respirology

The 17th PCCP Midyear Convention
**STATE-OF-THE-ART
PULMONOLOGY:
CONVERGENCE OF PRACTICE**

An Educational Seminar of the
Asian Pacific Society of Respirology (ESAP)

August 6 to 7, 2014
Crowne Plaza Manila Galleria
Ortigas Avenue
Quezon City, Philippines

MESSAGES



PROFESSOR ARTH NANA
President
Asian Pacific Society
of Respirology

Dear Colleagues,

The APSR has been historically weighting the importance of education for respiratory field to both local researchers and sometimes the public in Asian Pacific region. As the name ESAP: Educational Seminar of the Asia Pacific Society of Respirology indicates, the purpose is to improve and disseminate contemporary state-of-the-art knowledge and skills in the study and practice of respiratory medicine in the region by inviting the top class specialists from various respiratory fields, and organizing educational seminars.

I am very much delighted that ESAP Manila will be held at the Crowne Plaza Manila Galleria Hotel, Philippines, on August 6 and 7, 2014, hosted by the Philippine College of Chest Physicians; PCCP: one of our en bloc member societies we are closely working with. The theme of the ESAP: "State of the Art Pulmonology: Convergence of Practice", highlights the rapid advances in this field and the need for proper collaboration among different disciplines which deal with various respiratory ailments. The PCCP and the APSR are confident that all participants would be satisfied with the scientific program of the ESAP.

On behalf of the PCCP and the APSR, I look forward to your attendance at the ESAP Manila.

Takeda **NYCOMED**
Nycomed: a Takeda Company

NYCOMED PHILIPPINES
17th Floor, Zuellig Building, Makati Avenue
cor Paseo de Roxas, Makati City, Philippines 1225
Telephone Number: +632-575-0000
Fax Number: +632-575-0079
www.nycomed.com

References: 1. Patel P, Patel D, Kunjibettu S, Hall N, et al. Onset of Action of Ciclesonide Once Daily in the Treatment of Seasonal Allergic Rhinitis. ENT J. 2008;87:340-353. 2. Barner PH, Wingerzahn MA, van Ravel JH, Hampel E, et al. Efficacy and safety of ciclesonide nasal spray for the treatment of seasonal allergic rhinitis. J Allergy Clin Immunol. 2006;118:1142-1148. 3. Berger W, Nayak A, Lanier B, Kaiser H, Laforce C, Darken P, Hall N, Wingerzahn M. Efficacy and Safety of Once-Daily Ciclesonide Spray in Children With Allergic Rhinitis, Pediatric Asthma, Allergy & Immunology. 2008;21:73-82. 4. Tabe K, et al. J Pharmacol. 2011;163:53-67.

PH40W/OMUS2/07-2014



MESSAGES

Mabuhay and welcome to the PCCP 17th Midyear Convention!

In collaboration with the APSR, we aim to bring to the advanced practitioner a realistic training experience. It will be an excellent opportunity for the specialist as interactive simulations focused on different clinical scenarios encountered in practice are offered. The generalist can update their knowledge of respiratory medicine as the program was configured to provide diverse topics of regional interest. We encourage you to attend this once a year event and to get the chance to meet the experts!



CHAD REY V. CARUNGIN, MD., FPCCP.
President
Philippine College of Chest Physicians



LENORA C. FERNANDEZ, MD., FPCCP.
Chair, 17th Midyear PCCP Convention & ESAP Course

Dear Colleagues and Friends,

Mabuhay! The Philippine College of Chest Physicians (PCCP) welcomes you all to its 17th Midyear Convention on August 6-7, 2014 at Crowne Plaza, Ortigas Avenue, Quezon City. Delegates, speakers, and facilitators from the Asia-Pacific region will join us since this is a joint Educational Seminar of the Asian Pacific Society of Respirology (ESAP).



MA. JANETH T. SAMSON, MD., FPCCP.
Co-Chair, 17th Midyear PCCP Convention & ESAP Course

Our theme is "State of the Art in Pulmonology: Convergence in Practice" and we offer hands-on sessions on basic and advanced pulmonary diagnostic and therapeutic techniques while lively discussions and consensus formation will be done on current issues in the field of pulmonary medicine.

Join us and be one with your Asia Pacific colleagues as we harmonize towards ASEAN integration in the field of pulmonary medicine!

THE PHILIPPINE COLLEGE OF CHEST PHYSICIANS



Established on April 25, 1973, the Philippine College of Chest Physicians is a value-centered specialty organization acknowledged as the authority in pulmonary medicine in the country. It empowers its members, who are recognized and respected experts in the field, to constantly adapt and innovate to set the benchmark of excellence in the practice of pulmonary medicine in the Philippines. It is the PCCP's goal to promote greater involvement, collaborative partnership and strategic alliances with Asian and International organizations relating to academe, clinical and policy-making activities.

Membership:
611 fellows, 59 diplomates, 8 honorary members, and 375 associate members.



The PCCP Board 2014-2015



The National Strategy for COPD, November 2013



World Asthma Day, May 07, 2014



Republic Act 10351 (An Act Restructuring the Excise Tax on Alcohol and Tobacco) or the "Sin Tax Reform" of 2012, being signed into law by the President of the Philippines

Health connects us all

Health connects us all

Delivering great medicines to patients through innovative science

AstraZeneca is a global, innovation-driven biopharmaceutical business that focuses on the discovery, development and commercialization of prescription medicines for six important areas of healthcare: Cardiovascular & Metabolic, Gastrointestinal, Infection, Neuroscience, Oncology and Respiratory & Inflammation.

Powerful Global Reach...

AstraZeneca has around 51,000 employees in over 100 countries worldwide. R&D employs over 15,700 people at 14 principal research and development centers in eight countries, complemented by a worldwide clinical development capability.

...with a Local Touch

AstraZeneca Philippines takes part in global research with 11 dedicated people working on 9 ongoing clinical trials, involving more than 800 patients, in more than 30 sites all over the country.

Growing in Asia

We have a strong and growing R&D presence in Asia. Work at our Bangalore research facility in India is dedicated to finding a new therapy for Tuberculosis. At our Innovation Centre China (ICC) in Shanghai, our initial therapeutic focus is on Cancer.

PH_MZ_03_228_022_12/2013



AstraZeneca Pharmaceuticals (Phils), Inc.
16/F, Net 3 Center, Cor 3rd Ave. & 30th Street
Bonifacio Global City, Taguig, Philippines
Tel no. : +632 777 8700
www.astrazeneca.com

AstraZeneca



Add breath back with a
Rapid-acting, Long-lasting LAMA^{1,2}



**COMING
 SOON**

PHI407226122 11 JULY 2014

References: 1. Seebri® Breezhaler® [SmPC]. http://www.ema.europa.eu/docs/en_GB/document_library/EPAR_-_Product_Information/human/002430/WC500133769.pdf. August 2012. Accessed December 17, 2012. 2. Kerwin E, Hebert J, Gallagher N, et al. Efficacy and safety of NVA237 versus placebo and tiotropium in patients with COPD: the GLOW2 study. *Eur Respir J*. 2012;40:1106-1114.

Full Prescribing Information is available upon request from
Novartis Healthcare Philippines, Inc.
 5/F Asian Reinsurance Building Salcedo corner Gamba Streets
 Legaspi Village, Makati City 1229
 Tel. Nos.: 368-7777 Fax No.: 816-4191



THE ASIAN PACIFIC SOCIETY OF RESPIROLOGY

The **Asian Pacific Society of Respiriology** was established in 1986. The objectives of the Society are the advancement and promotion of knowledge of the respiratory system in health and disease. It strives to encourage research, improve clinical practice through teaching, increase awareness of health problems in the area and promote the exchange of knowledge among respirologists in the Asia Pacific region. The specific aims of the Society are:



- Promoting and coordinating activities in the field of respiratory medicine
- Fostering research activities in the field of respiratory medicine
- Organizing and coordinating regular congresses and occasional meetings
- Producing regular publications, including a Newsletter, the APSR Respiratory Updates and *Respirology*, a journal of international repute.

As the name ESAP indicates, the purpose is to improve and disseminate contemporary state-of-the-art knowledge and skills in the study and practice of respiratory medicine in the Asia-Pacific region. by inviting the top class specialists from various respiratory fields, and organizing educational seminars.



CONVENTION INFORMATION

CONVENTION DATES

The Convention dates are from 06 to 07 August 2014.

CONVENTION VENUE

The Convention venue is at the 4th floor of the Crowne Plaza Manila Galleria, Quezon City, Philippines

ADDRESS BEFORE AND AFTER THE CONVENTION

PHILIPPINE COLLEGE OF CHEST PHYSICIANS
84-A Malakas St., Barangay Pinyahan,
Diliman, Quezon City 1100
Tel. No. (+632) 924-9204
Fax No. (+632) 924-0144
E-mail address: secretariat@philchest.org
Website: www.philchest.org

ADDRESS DURING THE CONVENTION

Convention Secretariat
Business Center,
4/F Crowne Plaza Manila Galleria,
Quezon City

REGISTRATION INFORMATION

The Convention registration Area is at the pre-function area of the 4/F Crowne Plaza Manila Galleria, Quezon City

Registration counters will be open on the following dates:

August 6, 2014 (Wednesday)	7:30AM – 4:30PM
August 7, 2014 (Thursday)	7:30AM – 12:00NN

Upon arrival at the venue, all participants should check in at the Registration Area to receive their meeting badges and kits and to sign the attendance form for CME units. Pre-registered delegates, officers, senior fellows, life fellows, and organizing committee should register and get their convention kit at the pre-function area, 4/F Crowne Plaza Manila Galleria, Quezon City.

TIOTROPIUM bromide
SPIRIVA®

The only LAMA with EVIDENCE A on reduction of exacerbations and related hospitalizations (GOLD 2014).

NOW AVAILABLE in a UNIQUE RESPIMAT® Soft Mist® Inhaler

Boehringer Ingelheim

Reference: Global Initiative for Chronic Obstructive Lung Disease (GOLD). Global Strategy for Diagnosis, Management and Prevention of COPD Updated 2014. Please review product information before prescribing.

AIR FLOWS WITH ADEFLO

**SALMETEROL XINAFOATE
FLUTICASON PROPRIONATE**

ADEFLO
50mcg / 250 mcg
50mcg / 500 mcg
Dry Powder For Inhalation in Capsule
ANTI-ASTHMA

CDCi
THE CATHAY DRUG CO., INC.
271 Veranda | Condo minimum
120 Amoroso St., Legaspi Village
Makati City

CONVENTION INFORMATION

Delegates registering on-site should fill up the registration form before proceeding to the On-site Registration Counter located at the pre-function area, 4/F Crowne Plaza Manila Galleria, Quezon City to pay the convention fees and receive their meeting badges and kits.

Each convention delegate is entitled to:

- Attend the Opening Ceremonies
- Participate in the Plenary Sessions and Convention Symposia
- Visit Exhibit Areas
- Coffee breaks (on first come-first served basis)
- Receive convention kits, handout and publications

Delegates are advised to wear their badges at all time. NO BADGE, NO ENTRY. Please report lost badges immediately at the Registration Counter. Registration badges will be issued for a fee of P 100

ADMISSION REQUIREMENTS/TICKETS FOR SATELLITE SYMPOSIA

The **Luncheon Symposia** are activities of our corporate sponsors and access to these is by invitation of the sponsoring company.

As registration and tickets are required for attendance at these events, session rooms are to be vacated prior to the luncheon seminars.

SPEAKER PREPARATION/SLIDE PREVIEW ROOM

Speaker assistance and slide preview will be provided at the Emerald A, 4/F Crowne Plaza Manila Galleria, Quezon City. Speakers are required to endorse their presentations to the technical team for virus scan of USB flash disk and other technical compatibility check.

SCIENTIFIC SESSIONS

Scientific sessions will be held at the Ballroom A, B, CDE, Ruby & Opal Room located at the 4/F Crowne Plaza Manila Galleria, Quezon City

CONVENTION INFORMATION

ACCREDITATION STATEMENT

The 17th Midyear Convention has been awarded with continuing medical/professional education units from the following professional medical societies:

PHILIPPINE MEDICAL ASSOCIATION

90 credits units

PHILIPPINE COLLEGE OF PHYSICIANS

30 credit units

PHILIPPINE ACADEMY OF FAMILY PHYSICIANS

26 credit units Cat. II

PHILIPPINE COLLEGE OF CHEST PHYSICIANS

80 credits units

CERTIFICATE OF ATTENDANCE

A certificate of attendance is incorporated in the registration kits. Attendees are advised to check the contents of their kits on the first day.

LANGUAGE

English is the official language for the entire Scientific Program

INTERNET CONNECTION

Details for internet connectivity at the Convention venue are as follows:

Username: mabuhayPCCP
Password: pulmonology

ORGANIZING COMMITTEE

Overall Chair FERNANDEZ, Lenora C., MD, FPCCP
SAMSON, Ma. Janeth T., MD, FPCCP

Convention Secretary DE GUIA, Eloisa S., MD, FPCCP

Convention Treasurer MATEO, Maria Paz B., MD, FPCCP

Adviser DE GUIA, Teresita S., MD, FPCCP
International Liaison Officers CAMPOMANES, Celeste Mae L., MD, FPCCP
DALUPANG, Julius Caesar J., MD, FPCCP
SAMSON, Ma. Janeth T., MD, FPCCP

Scientific BENEDICTO, Jubert P., MD, FPCCP

ALBAY, Albert Jr. B., MD, FPCCP
DELOS REYES, Virginia S., MD, FPCCP
MAGHUYOP, Norman L., MD, FPCCP
GARCIA, Liza L., MD, FPCCP

Ways and Means

Commercial Exhibits GONONG, Joven Roque V., MD, FPCCP

Registration OCAMPO, Gregorio P., MD, FPCCP

Hotel Accommodation & Transportation GUIANG, Jude P., MD, FPCCP
PANALIGAN, Roland, MD

Socials ONG-CABRERA, Glynn A., MD, FPCCP
GARCIA, GERALDINE D.C., MD, FPCCP

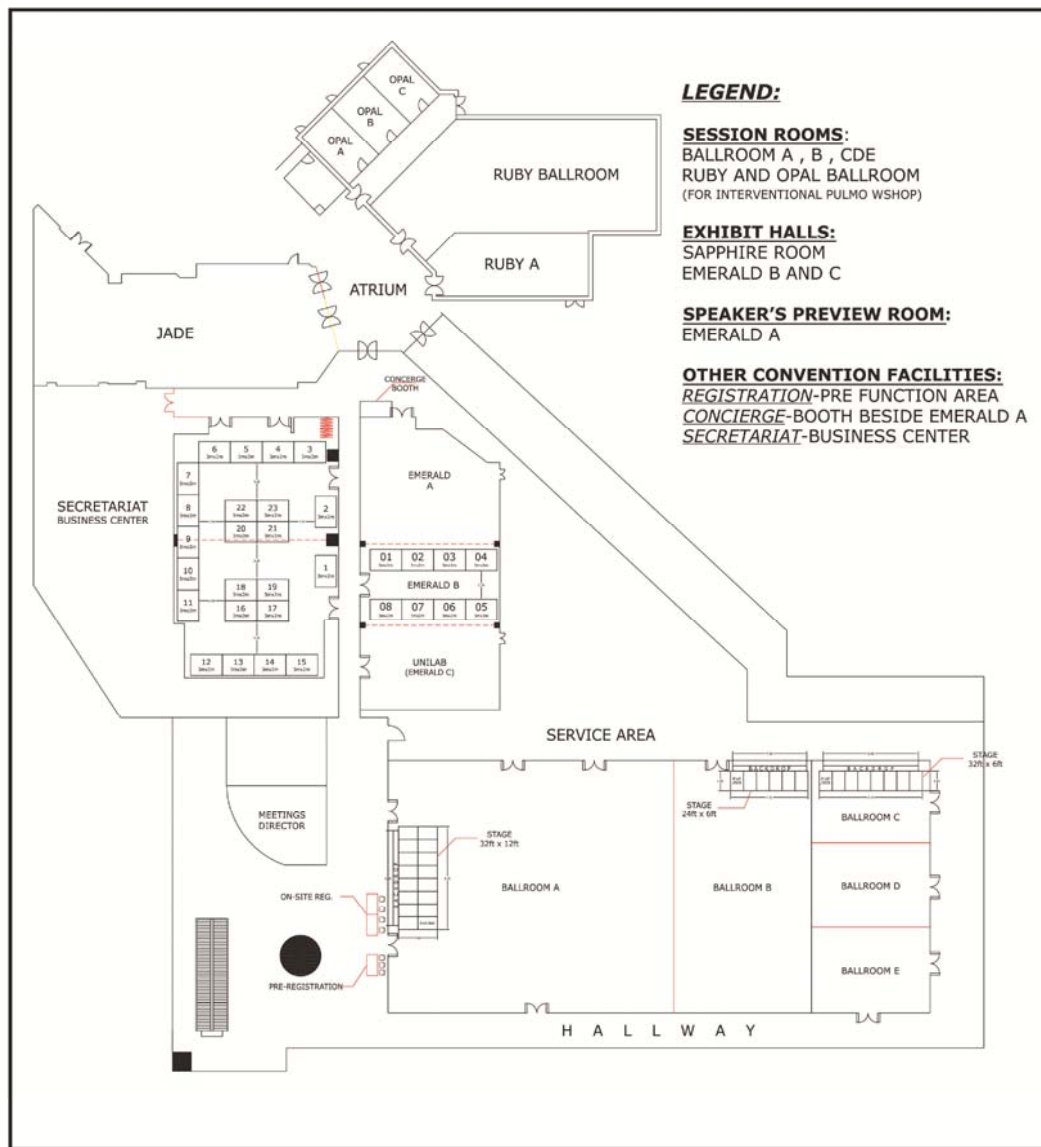
Physical Arrangements & Documentation CORTES, Christopher P., MD, FPCCP
TIPONES, Rommel N., MD, FPCCP
SEMPIO, Earl Louis A., MD
EVANGELISTA, RYAN R., MD

Awards DE VERA, Chona A., MD, FPCCP

Publications RESIDE, Evelyn Victoria E., MD, FPCCP

Publicity PANGANIBAN, Shirley Jane C., MD, FPCCP
VILLANUEVA, Maria Peachy Lara L., MD, FPCCP

CONVENTION FLOOR PLAN



CONVENTION INFORMATION

WEATHER & DRESS CODE

The weather temperature in Manila is fair and pleasant, with a temperature range from 21 °C to 32 °C. For the daytime, skirts, slacks, tropical business suits and dresses are applicable. Dress is generally smart casual except for official functions.

For official functions, the following are the advised outfits:

Opening Ceremonies	Business Suit
Fellowship Night	Smart Casual

ELECTRICITY

Voltage in the Philippines is 220V 500Hz., and electricity is available in all hotels.

BANK AND CURRENCY

Local currency is Philippine peso. Notes come in denominations of P 1,000, P 500, P200, P 100, P50, and P 20 peso. Currently, US \$ 1 is about P 43.50 but the exchange rate is subject to fluctuations.

LIABILITY

The convention organizers shall not be held liable for any personal injury, loss of or damage to any property of convention participants.

DISCLAIMER

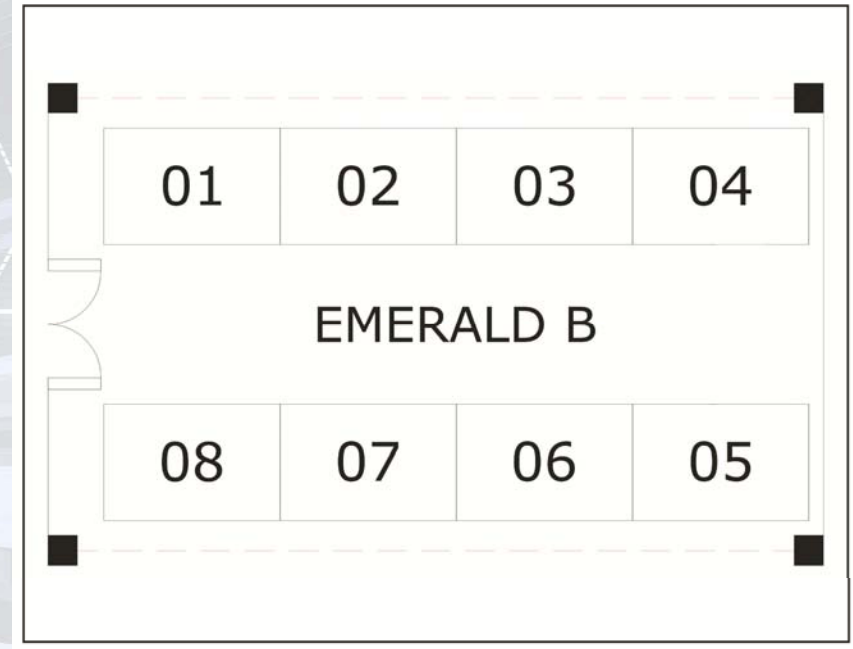
While every attempt will be made to ensure all features of the program mentioned herein will take place, the convention organizers reserve the right to make any changes should the need arise.

17th MIDYEAR CONVENTION
State of the Art Pulmonology: Convergence of Practice

PROGRAM AT-A-GLANCE

Time	August 6, 2014 (Weds)		August 7, 2014 (Thurs)		Interventional Pulmonology	
	11 th PCCP Inter-Hospital Engagement: The Pulmonary and Critical Care Debate		[Skills stations 45 minutes each]			
9:00	Opening Ceremonies and Keynote Lecture "Is the Health Care Sector Ready for the ASEAN Integration in 2015?" Jose Y. Cueto Jr., MD, MHPd		Ventilator waveforms Interpretation Non-invasive ventilation trouble shooting		STATION 1: Transbronchial Procedures STATION 2: Thermal, Laser and Electrical Procedures STATION 3: EBUS STATION 4: Endobronchial valves STATION 5: Airway stenting STATION 6: Pleuroscopy	
10:00 - 10:40	Opening of Exhibits		Spirimetry, Lung volumes, DLCO, airway resistance, MVV interpretation CPET interpretation Sleep Study interpretation Imaging in Pulmonary Medicine			
10:40 - 11:00	Plenary Lecture 1: "Tobacco Control in the Asia Pacific: Are We Winning the Battle?" Carmen Audera-Lopez, MD, MPH		Perioperative Pulmonary Resection Perioperative Management for Non-thoracic Surgery			
11:00 - 12:00	Visit the Exhibits		Imaging in Pulmonary Medicine			
12:00 - 1:30	LS 1 Cathay Drug (Ballroom A)	LS 2 Novartis (Ballroom B)	LS 3 Takeda (Ballroom CDE)	LS 4 Boehringer Ingelheim (Ballroom A)	LS 5 Astra Zeneca (Ballroom B)	LS 6 Glaxo SmithKline (Ballroom CDE)
1:30 - 2:00	Visit the Exhibits		Spirimetry, Lung volumes, DLCO, airway resistance, MVV interpretation CPET interpretation Sleep Study interpretation Imaging in Pulmonary Medicine			
2:00 - 3:20	CS 1 Regional Issues in TB Control	CS 2 Pneumonia Management Strategies: Hype or Real?	CS 3 "Neglected" Respiratory Diseases in the Asia-Pacific	CS 4 Emerging Critical Issues in Asthma	CS 5 COPD: Novel Concepts and Promising New Drugs	CS 6 Post-TB Bronchiectasis-in-Focus
3:20 - 4:30	Plenary Lecture 2: "Advances in Lung Cancer Treatment" Kazuhisa Takahashi, MD, PhD		Perioperative Pulmonary Resection Perioperative Management for Non-thoracic Surgery			
4:40 - 5:15	Visit the Exhibits		The Mexico City Principles Latest Developments in the Relationship Between Pharmaceutical Industry and Healthcare Professionals Francisco P. Tranquilino, MD, FCCP			
5:15	Fellowship Night		PCCP Business Meeting Closing Ceremonies			
7:00						

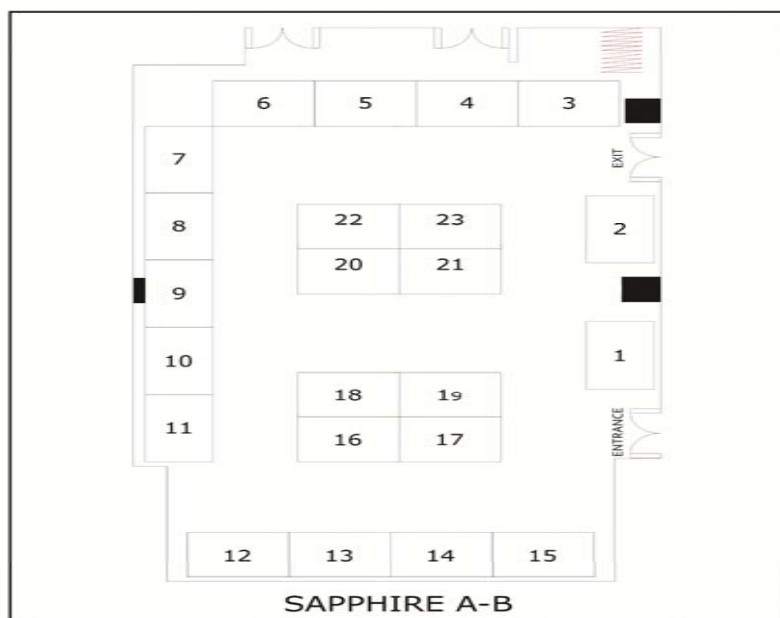
COMMERCIAL EXHIBITS



Booth No.	Company Name	Booth No.	Company Name
1	MICROLAB	5	THE FILIPINO DOCTORS
2	PEDIATRIC ASSOCIATES INC.	6	GLENMARK PHILIPPINES
3	PHAREX HEALTH CORP.	7	THE CATHAY DRUG CO. INC.
4	ICLICK INC.	8	THE CATHAY DRUG CO. INC.

Emerald C (Hospitality Suite) - UNITED LABORATORIES

COMMERCIAL EXHIBITS



Booth No.	Company Name	Booth No.	Company Name
1	NOVARTIS HEALTHCARE PHILS., INC.	13	SANDOZ PHILIPPINES CORP.
2	GLAXO SMITHKLINE	14	MULTICARE PHARMA PHILS. INC.
3	OLYMPUS	15	GETZ PHARMA PHILS. INC.
4	DUBBEL MEDICAL CORPORATION	16	OEP PHILIPPINES INC.
5	SOMNOTECH PHILS. INC.	17	THE CATHAY DRUG CO. INC.
6	PHILIPPINE UNION COMMERCIAL, INC.	18	PFIZER
7	OMRON HEALTHCARE	19	BOEHRINGER INGELHEIM
8	SANNOVEX PHARMACEUTICALS	20	NATRAPHARM INC.
9	INNOGEN PHARMA	21	ASTRAZENECA PHILIPPINES
10	HOSPIRA PHILIPPINES INC.	22	SANOFI PASTEUR
11	ZYDUS PHILIPPINES INC.	23	NYCOMED: A TAKEDA COMPANY
12	OTSUKA (PHILS.) PHARMA INC.		

SPEAKERS' PROFILE

JOSE Y. CUETO, JR., MD., FPCS., MHPed.
 Philippine Representative to the ASEAN Joint Coordinating Committee for Medical Practitioners (AJCCM), ASEAN MRA Member, Professional Regulatory Board (PRC) of Medicine Over-all Coordinator, Working Group for International Alignment, Philippine Qualifications Framework (PQF), PRC Member, Task Force for the ASEAN Qualifications Reference Framework (AQRF)



CARMEN AUDERA-LOPEZ, MD, MPH
 Acting Team Leader, Tobacco Free Initiative World Health Organization, WPRO

NOBUYUKI NISHIKIORI, MD., PHD.
 Team Leader / Medical Officer Stop TB and Leprosy Elimination, Division of Combating Communicable Diseases, WHO Western Pacific Regional Office Deputy Director, TB and Infectious Diseases Control Division (Health Service Bureau) / International Affairs Division, Ministry of Health, Labour and Welfare, Kasumigaseki Chiyoda-ku Tokyo



A.B.M. Tauhidul Islam, MBBS., MPH.
 Medical Officer, Stop TB and Leprosy Elimination, Division of Combating Communicable Diseases, WHO Western Pacific Regional Office Former Technical Officer, TBC, Stop TB Department, WHO

SPEAKERS' PROFILE



JAIME C. MONTOYA, MD., MSc.
 Professor V, Department of Medicine, University of the Philippines College of Medicine
 Executive Director
 Philippine Council for Health Research and Development
 Department of Science and Technology
 Consultant, Clinical Department, Research Institute for Tropical Medicine, Department of Health

ALBERT L. RAFANAN, MD., FPCCP.

Chairman, Department of Medicine, Chong Hua Hospital
 Head, Pulmonary Unit and Center for Sleep Disorders, Chong Hua Hospital
 Professor of Medicine 1, Cebu Doctors University College of Medicine
 President, Philippine Society of Sleep Medicine
 Chairman, Philippine Board of Sleep Medicine



REGINA P. BERBA, MD., MSc.

Clinical Associate Professor, University of the Philippines College of Medicine
 Medical Specialist III, UP Philippine General Hospital
 Chair, Infection Control Committee (since 2004)
 Head, Infectious Diseases Section, The Medical City
 International Ambassador Society of Healthcare in America 2013



VICENTE Y. BELIZARIO, JR., MD., MTM&H

Professor 10 and University Scientist III
 Department of Parasitology, College of Public Health, University of the Philippines, Manila
 Adjunct Faculty, Global Health Program, University of Pittsburgh School of Medicine
 Member and Country Representative, Steering Committee, Forum for Ethics Review Committees in Asia and the Western Pacific (FERCAP)
 Member, Editorial Board, Acta Medica Philippina



PROGRAM DETAILS

MEDICAL PLEUROSCOPY

A/Prof. Lee Pyng
 Ariel A. Boongaling, MD.

At the end of the session, the participant should be able to:

1. Identify the indications for medical pleuroscopy as opposed to video-assisted thoracoscopic surgery;
2. Identify the principles, equipment, preparations needed to perform medical pleuroscopy; and
3. Anticipate complications of medical pleuroscopy

THE MEXICO CITY PRINCIPLES

Latest Developments in the Relationship Between the Pharmaceutical Industry and Healthcare Professionals
 Francisco P. Tranquilino, MD., FPCP.

17th MIDYEAR CONVENTION BUSINESS MEETING

Induction of New Chapter Officers

INTERVENTIONAL PULMONOLOGY TRACK

Station 6
 Ruby Opal Ballroom
 07 August 2014
 Crowne Plaza Manila Galleria

SPECIAL SESSION

07 August 2014
 4:40pm to 5:00pm
 Ballroom A and B
 Crowne Plaza Manila Galleria

SPECIAL SESSION

07 August 2014
 5:00pm onwards
 Ballroom A and B
 Crowne Plaza Manila Galleria

PROGRAM DETAILS

INTERVENTIONAL PULMONOLOGY TRACK

Station 2
Ruby Opal Ballroom
07 August 2014
Crowne Plaza Manila
Galleria

THERMAL, LASER, ELECTRICAL PROCEDURES

Christopher P. Cortes, MD., FPCCP.

At the end of the session, the participant should be able to:

1. Know the indications and contraindications to performing electrocautery, argon plasma, thermoplasty, and laser procedures; and
2. Manage potential complications of electrocautery, argon plasma, thermoplasty and laser procedures.

INTERVENTIONAL PULMONOLOGY TRACK

Station 3
Ruby Opal Ballroom
07 August 2014
Crowne Plaza Manila
Galleria

ENDOBONCHIAL ULTRASOUND

Julius Caesar J. Dalupang, MD., FPCCP.

Aven Kerr S. Ubalde, MD., FPCCP.

At the end of the session, the participant should be able to:

1. Know the indications and contraindications to doing endobronchial ultrasound;
2. Identify equipment and preparations needed to perform an EBUS procedure;
3. Identify structures and images seen during an endobronchial ultrasound;
4. Discuss the step by step conduct of doing an endobronchial ultrasound-guided needle aspiration biopsy;
5. Identify the case-specific elements that are important for the strategy and execution of EBUS; and
6. Discuss maneuvers to improve diagnostic yields.

INTERVENTIONAL PULMONOLOGY TRACK

Station 4
Ruby Opal Ballroom
07 August 2014
Crowne Plaza Manila
Galleria

ENDOBONCHIAL VALVES

Ma. Janeth T. Samson, MD., FPCCP.

Mr. Jason Koh

At the end of the session, the participant should be able to:

1. Identify candidates for endobronchial valves;
2. Discuss proper size selection of endobronchial valves; and
3. Anticipate complications of endobronchial valves.

INTERVENTIONAL PULMONOLOGY TRACK

Station 5
Ruby Opal Ballroom
07 August 2014
Crowne Plaza Manila
Galleria

AIRWAY STENTING

Edmund E. Villaroman, MD., DPBS., FPATACSI.

At the end of the session, the participant should be able to:

1. Identify indications and contraindications to airway stenting;
2. Plan appropriate placement of airway stenting; and
3. Anticipate complications of airway stenting.

SPEAKERS PROFILE

ABUNDIO A. BALGOS, MD., FPCCP., MHA.

President and Chief Executive Officer,
The Health Centrum, Inc., Roxas City
Past President, Philippine College of Chest Physicians
Member, PCCP Council on ILD and
Occupational Lung Diseases
Philippine College of Physicians'
2014 Exemplar in Health Advocacy
Awardee, University of the Philippines Alumni Association
2014 Distinguished Alumni for Public Health Promotion



A/Prof. PYNG LEE

Associate Professor, Yong Loo Lin School of Medicine, National
University of Singapore
Senior Consultant, Division of Respiratory and Critical Care
Medicine, National University Hospital
Associate Editor, Journal of Bronchology and Interventional
Pulmonology
Member, Core Scientific Committee, International Study of
Lung Cancer
Past President, Singapore Thoracic Society



RICARDO C. ZOTOMAYOR, MD., FPCCP.

Associate Professor III, College of Medicine, University of
the East Ramon Magsaysay Memorial Medical Center
Assistant Director, Institute of Pulmonary Medicine,
St. Luke's Medical Center
Co-Chairman, Asthma Council
Past Chairman, Specialty Board in Pulmonary Medicine
Philippine College of Chest Physicians



SPEAKERS' PROFILE



MANUEL C. JORGE, II, MD., MPH.
 Associate Professor 4, UP College of Medicine
 Associate Adjunct Professor of Medicine, Medical College of Wisconsin, USA
 Head, Pulmonary Section and Medical Specialist III, National Kidney and Transplant Institute
 Head, Sleep Disorders Program, Department of Neurosciences, Department of Medicine, UP Philippine General Hospital
 PCCP's Most Outstanding Fellow, 2013
 Member, PCCP Specialty Board in Pulmonary Medicine
 Member, PCCP Asthma Council

MARIA NILDA M. MUNOZ, MSc.
 Balik-Scientist Awardee, DOST
 Associate Professor of Medicine and Director, Research Management Office, St. Lukes' College of Medicine, WHQM, Quezon City



TIM S. TRINIDAD, MD., FPCCP.
 Professor 1, Department of Physiology
 Faculty of Medicine and Surgery, University of Santo Tomas
 Head, Pulmonary Rehabilitation Unit, University of Santo Tomas Hospital and St. Luke's Medical Center Quezon City
 Chairman, Council on COPD and Pulmonary Rehabilitation
 Philippine College of Chest Physicians

IMELDA MURIEL-MATEO, MD., FPCCP., MBAH.
 Program Manager, ARMMC NTP – DOTS CLINIC
 Medical Specialist III,
 Amang Rodriguez Memorial Medical Center
 Board Member, Philippine College of Chest Physicians
 Chairman, PCCP Council on Tobacco or Health and Air Pollution
 Chairman, PCP Residency Training Program Committee,
 Philippine College of Physicians



PROGRAM DETAILS

INTERVENTIONAL PULMONOLOGY TRACK
 07 August 2014

Chaired by Albert Albay, Jr., MD., FPCCP.
 Adviser: Julius Caesar J. Dalupang, MD., FPCCP. and Ma. Janeth T. Samson, MD., FPCCP.

At the end of the session, the participant should be able to:

1. Properly perform pleuroscopic evaluation;
2. Identify candidates for various interventional pulmonary procedures:
 - Transbronchial biopsy
 - Transbronchial needle aspiration
 - Airway stenting
 - Bronchial thermoplasty, electrocautery, laser procedures
 - Endobronchial valve placement
 - Medical pleuroscopy
3. Conduct proper performance of endobronchial ultrasound;
4. Identify nodal stations accessible by EBUS-guided needle aspiration;
5. Perform various interventional pulmonary procedures under direct supervision.

Workshop Mechanics:

1. Each participant will rotate through six stations as noted in the program. There will be 12 to 15 participants per station.
2. Participants are to stay in the station for an hour. Facilitators will guide participants in achieving the learning objectives.
3. The activities in each station begin with a short 15-minute powerpoint lecture given by the facilitator, to be followed a 45-minute skills workshop assigned to each station.

TRANSBRONCHIAL PROCEDURES

Joven Roque V. Gonong, MD., FPCCP.
 Manuel Hector U. Silos, MD., FPCCP.

At the end of the session, the participant should be able to:

1. Know the indications and contraindications to transbronchial biopsies;
2. Know the necessary pre-procedural steps in preparing a patient for transbronchial biopsy;
3. Correlate radiologic and bronchoscopic anatomy in performing transbronchial biopsies;
4. Practice the different maneuvers of doing transbronchial needle aspiration biopsies;
5. Know principles and techniques of doing transbronchial biopsies on peripheral lung lesions;
6. Be familiar with performing transbronchial curettage biopsies for peripheral lung lesions;
7. Be familiar with the conduct of transbronchial lung tissue biopsy for discrete pulmonary lesions;
8. Gain ideas on improving diagnostic yields during transbronchial biopsies;
9. Manage potential complications of transbronchial biopsies.

INTERVENTIONAL PULMONOLOGY TRACK
 Station 1
 07 August 2014
 Ruby Opal Ballroom
 Level 4
 Crowne Plaza Manila
 Galleria

PROGRAM DETAILS

GENERAL
PULMONOLOGY
TRACK
Session 16
07 August 2014
3:45pm to 4:30pm
Ballroom B
Level 4
Crowne Plaza Manila
Galleria

IMAGING IN PULMONARY MEDICINE

Lourdes Badion, MD., FPCR.

Chaired and Moderated by Raymund A. Odrunia, MD., FPCCP.

At the end of the session, the participant should be able to:

1. Describe the basic principles and concepts of computed tomography, CT-angiography, PET scan and lung perfusion scan;
2. List the indications and contraindications and limitations of various lung imaging techniques;
3. Correlate imaging to normal anatomy and pathology; and
4. Interpret lung imaging results in representative clinical cases.

SPEAKERS' PROFILE

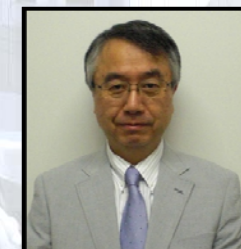
VINCENT M. BALANAG, JR, MD., FPCCP.
Medical Specialist II, Lung Center of the Philippines
Research Consultant, Philippine Tuberculosis Society, Inc.
(PTSI)

Secretary & Member, Executive Committee, PCCP
Past Chairman, PCCP Council on Tuberculosis
Past National Chair, Philippine Coalition Against Tuberculosis



ORLANDO R. IGNACIO, MD
Head, Section of Vascular and Interventional Radiology,
Manila Doctors Hospital
Past President, Philippine Society of Vascular and
Interventional Radiology
Past President, Ultrasound Society of the Philippines
Board of Examiners, Philippine Society of Vascular and
Interventional Radiology

KAZUHISA TAKAHASHI, MD., PHD.
Professor and Chairman, Division of Respiratory Medicine
Juntendo University Faculty of Medicine &
School of Medicine
Deputy Secretary and Educational Committee Member of
the Asian Pacific Society of Respirology



CELESTE MAE L. CAMPOMANES, MD., FPCCP.
Associate Professor III, Department of Physiology
Faculty of Medicine and Surgery, University of Santo Tomas
Medical Staff Secretary,
St. Luke's Medical Center QC
Immediate Past President, Philippine College of
Chest Physicians
Member, Council on COPD and Pulmonary Rehabilitation,
PCCP
Member, Council on Diagnostics and Therapeutics Council,
PCCP

SPEAKERS' PROFILE



JOHN CLIFFORD E. ARANAS, MD., FPCCP.
 Training Officer, Adult Pulmonary Medicine Fellowship
 Training Program, Perpetual Succour Hospital
 Head, Section of Pulmonary Medicine, Cebu (Velez)
 General Hospital
 Associate Professor II, Cebu Institute of Medicine

NEWELL R. NACPIL, MD., FPCCP.
 Section Head, Medical Intensive Care Unit,
 Lung Center of the Philippines



VIRGINIA S. DELOS REYES, MD., FPCCP., MHPed.
 Head, Sleep Lab and Sleep Disorders' Clinic, Lung Center of the
 Philippines
 Assistant Training Officer, Department of Pulmonary Medicine,
 Lung Center of the Philippines
 Faculty, Ateneo School of Medicine and Public Health
 Vice President, Philippine Society of Sleep Medicine
 Chair, Council on Sleep Medicine, Philippine College of Chest
 Physicians
 Member, Specialty Board, Philippine Society of Sleep Medicine

JOSEPH LEONARDO Z. OBUSAN, MD., FPCR.
 Department Manager III
 Department of Radiology, Lung Center of the Philippines
 Medical Specialist I, Philippine Heart Center
 Past Examiner, Philippine College of Radiology



PROGRAM DETAILS

PERI-OPERATIVE PULMONARY EVALUATION FOR LUNG RESECTION

Benilda B. Galvez, MD., FPCCP.

Chaired and Moderated by Adelito D. Posas, MD., FPCCP.

At the end of the session, the participant should be able to:

1. Evaluate patients for thoracic surgery with regard to risk factors, candidacy for surgical resection, pulmonary function studies and possible post-operative disability;
2. Identify patients at increased risk for complications after lung resection;
3. Demonstrate the usefulness of predicted post-operative FEV1 as a marker of risk for adverse outcomes; and
4. Predict post-operative pulmonary function by a technique of simple calculation and use of lung perfusion scan.

SLEEP STUDY INTERPRETATION

Aileen Guzman-Banzon, MD., FPCCP.

Chaired and Moderated by Raymund A. Odrunia, MD., FPCCP.

At the end of the session, the participant should be able to:

1. Discuss the preparation of patient and equipment for sleep monitoring;
2. Recognize sleep stage and abnormal events recorded on the polysomnogram;
3. Discuss positive pressure treatment of sleep related breathing disorders; and
4. Interpret polysomnogram reports.

PERI-OPERATIVE MANAGEMENT FOR NON-CARDIOTHORACIC SURGERY

Eileen G. Aniceto, MD., FPCCP.

Chaired and Moderated by Adelito D. Posas, MD., FPCCP.

At the end of the session, the participant should be able to:

1. Discuss predictors of peri-operative pulmonary risk before non-cardiothoracic surgery;
2. Discuss strategies to reduce peri-operative pulmonary risk (eg. Atelectasis, pneumonia, respiratory failure); and
3. Given clinical cases, formulate risk stratification evaluation and give peri-operative recommendations.

GENERAL PULMONOLOGY TRACK

Session 13
 07 August 2014
 3:00pm to 3:45pm
 Ballroom A
 Level 4
 Crowne Plaza Manila
 Galleria

GENERAL PULMONOLOGY TRACK

Session 14
 07 August 2014
 3:00pm to 3:45pm
 Ballroom B
 Level 4
 Crowne Plaza Manila
 Galleria

GENERAL PULMONOLOGY TRACK

Session 15
 07 August 2014
 3:45pm to 4:30pm
 Ballroom A
 Level 4
 Crowne Plaza Manila
 Galleria

PROGRAM DETAILS

GENERAL PULMONOLOGY TRACK

Session 10
07 August 2014
1:30pm to 2:15pm
Ballroom B
Level 4
Crowne Plaza Manila Galleria

SPIROMETRY, LUNG VOLUMES, DLCO, AIRWAY RESISTANCE, MVV INTERPRETATION
Rachel Lee-Chua, MD., FPCCP.

Chaired and Moderated by Shelley A. Romero, MD., FPCCP.

At the end of the session, the participant should be able to:

1. Specify the indications for pulmonary function testing;
2. Describe how the following pulmonary function tests are performed:
A. Lung volumes C. Airway resistance
B. DLCO D. MVV
3. Understand interpretation and clinical implications of pulmonary function testing results, including differential diagnoses.

GENERAL PULMONOLOGY TRACK

Session 11
07 August 2014
2:15pm to 3:00pm
Ballroom A
Level 4
Crowne Plaza Manila Galleria

NON-INVASIVE VENTILATION TROUBLESHOOTING
Jubert P. Benedicto, MD., FPCCP.

Chaired and Moderated by Rosemarie Reyes-Pingol, MD., FPCCP.

At the end of the session, the participant should be able to:

1. Demonstrate an understanding of the principles of non-invasive ventilation and discuss application of theory to practice;
2. State the suggested initial settings for non-invasive mechanical ventilation; and
3. Properly monitor the patient and ventilator interface to include setting/troubleshooting for alarms and clinical parameters.

GENERAL PULMONOLOGY TRACK

Session 12
07 August 2014
2:15pm to 3:00pm
Ballroom B
Level 4
Crowne Plaza Manila Galleria

CPET INTERPRETATION
Josephine Blanco-Ramos, MD., FPCCP.

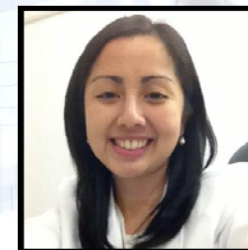
Chaired and Moderated by Shelley A. Romero, MD., FPCCP.

At the end of the session, the participant should be able to:

1. Understand the exercise physiology and principles behind CPET;
2. List the indications and contraindications of CPET;
3. Describe the practical way of conducting the test; and
4. Interpret results relevant to pulmonary practice including its use in pre-operative pulmonary assessment.

SPEAKERS' PROFILE

RACHEL M. LEE-CHUA, MD., FPCCP.
Active Consultant at Cardinal Santos Medical Center
- Section of Pulmonary Diseases
Consultant at Lee Medical Clinic, San Juan City
Member, Council on COPD and Pulmonary Rehabilitation
Member, Diagnostics and Therapeutics Council
Philippine College of Chest Physicians



JUBERT P. BENEDICTO, MD., FPCCP.
Associate Professor, UP Manila
Research Director, Philippine Tuberculosis Society, Inc.
DOTS Head, Dept. of Medicine, San Juan de Dios Hospital
Past National Chair, Philippine Coalition Against Tuberculosis (PhilCAT)

JOSEPHINE B. RAMOS, MD., FPCCP.
Unit Head, Pulmonary Rehabilitation Program
Pulmonary Diagnostic and Therapeutic Center,
The Medical City
Clinical Preceptor and Lecturer,
Ateneo School of Medicine and Public Health
Past President, PCCP
Past Chairman of the Specialty Board in Pulmonary Medicine
Philippine College of Chest Physicians



BENILDA B. GALVEZ, MD., FPCCP.
Medical Specialist IV and Assistant Head, Department of Pulmonary Medicine, Lung Center of the Philippines
Chairperson, Infection Control Committee (ICC)
Chairperson, HIV/AIDS Core Team (HACT)
Member, Medical Ethics Committee,
Lung Center of the Philippines
Fellow and Past President, Philippine College of Chest Physicians (PCCP)

SPEAKERS' PROFILE



AILEEN V. GUZMAN-BANZON, MD., FPCCP.
 Associate Professor, MCU-FDTMF College of Medicine
 Training Officer, Division of Pulmonary and Critical Care
 Medicine, Philippine Heart Center
 2014 PCCP Outstanding Researcher Awardee
 Past Chairman, Specialty Board in Pulmonary Medicine
 Philippine College of Chest Physicians

EILEEN G. ANICETO, MD., FPCCP.
 Faculty, College of Medicine, Mindanao State University
 Chairman, Infection Control Committee,
 Adventist Medical Center, Iligan City
 Chairman, TBDC, ISIPMDOTS
 Former Governor, Northcentral Mindanao, Philippine Medical
 Association
 Past President, PCCP Northern Mindanao Chapter
 Past President, Iligan Society of Internists



MARIA LOURDES S. BADION, MD., FPCCP.
 Executive officer and senior consultant, Diagnostic Imaging
 Center, Far Eastern University Nicanor Reyes Foundation
 Medical Center
 Officer-in-charge, Department of Radiology, Metropolitan
 Medical Center
 Training Officer and senior consultant, Department of
 Radiology, Lung Center of the Philippines
 Senior consultant, Section of Computed Tomography and
 Magnetic Resonance Imaging, United Doctors Medical Center

JOVEN ROQUE V. GONONG, MD., FPCCP.
 Head, Bronchoscopy Section, Department of Pulmonary
 Medicine, Lung Center of the Philippines
 Chairman, Pulmonary Training Program Accreditation Board
 Philippine College of Chest Physicians



PROGRAM DETAILS

**DUAL BRONCHODILATION: SYNCHRONY IN COPD
 MAINTENANCE THERAPY**
 Lenora C. Fernandez, MD., FPCCP.

Through a grant sponsored by **Boehringer Ingelheim**

GINA 2014 and OVER-ALL ASTHMA CONTROL
 Dina V. Diaz, MD., FPCCP.

Through a grant sponsored by **Astra Zeneca**

**ARE WE IN CONTROL? THE STATE OF ASTHMA IN THE
 ASIA PACIFIC**
 Celeste Mae L. Campomanes, MD., FPCCP.
 Teresita S. de Guia, MD., FPCCP.

Through a grant sponsored by **Glaxo SmithKline**

VENTILATOR WAVEFORMS INTERPRETATION
 Albert L. Rafanan, MD., FPCCP.

Chaired and Moderated by Rosemarie Reyes-Pingol, MD.,
 FPCCP.

At the end of the session, the participant should be able to:

1. Identify the components of ventilator waveforms;
2. Recognize abnormal scalar and loop waveforms and their clinical significance; and
3. Apply knowledge of ventilator waveform interpretation to optimize ventilator management.

**LUNCHEON
 SYMPOSIUM 4**
 07 August 2014
 12:00pm to 1:30pm
 Ballroom A
 Crowne Plaza Manila
 Galleria

**LUNCHEON
 SYMPOSIUM 5**
 07 August 2014
 12:00pm to 1:30pm
 Ballroom B
 Crowne Plaza Manila
 Galleria

**LUNCHEON
 SYMPOSIUM 6**
 07 August 2014
 12:00pm to 1:30pm
 Ballroom C, D & E
 Crowne Plaza Manila
 Galleria

**GENERAL
 PULMONOLOGY
 TRACK**
 Session 9
 07 August 2014
 1:30pm to 2:15pm
 Ballroom A
 Level 4
 Crowne Plaza Manila
 Galleria

PROGRAM DETAILS

GENERAL PULMONOLOGY TRACK
Session 6
 07 August 2014
 10:30am to 11:15am
 Ballroom B
 Level 4
 Crowne Plaza Manila Galleria

PERI-OPERATIVE PULMONARY EVALUATION FOR LUNG RESECTION

Vincent M. Balanag, Jr., MD., FPCCP.

Chaired and Moderated by Freddie G. Peleo, MD., FPCCP.

At the end of the session, the participant should be able to:

1. Evaluate patients for thoracic surgery with regard to risk factors, candidacy for surgical resection, pulmonary function studies and possible post-operative disability;
2. Identify patients at increased risk for complications after lung resection;
3. Demonstrate the usefulness of predicted post-operative FEV1 as a marker of risk for adverse outcomes; and
4. Predict post-operative pulmonary function by a technique of simple calculation and use of lung perfusion scan.

GENERAL PULMONOLOGY TRACK
Session 7
 07 August 2014
 11:15am to 12:00nn
 Ballroom A
 Level 4
 Crowne Plaza Manila Galleria

IMAGING IN PULMONARY MEDICINE

Joseph Leonardo Z. Obusan, MD., FPCR.

Chaired and Moderated by Gloria Giselle F. Pattaguan, MD., FPCCP.

At the end of the session, the participant should be able to:

1. Describe the basic principles and concepts of computed tomography, CT-angiography, PET scan and lung perfusion scan;
2. List the indications and contraindications and limitations of various lung imaging techniques;
3. Correlate imaging to normal anatomy and pathology; and
4. Interpret lung imaging results in representative clinical cases.

GENERAL PULMONOLOGY TRACK
Session 8
 07 August 2014
 11:15am to 12:00nn
 Ballroom B
 Level 4
 Crowne Plaza Manila Galleria

PERI-OPERATIVE MANAGEMENT FOR NON-CARDIOTHORACIC SURGERY

Abundio A. Balgos, MD., FPCCP.

Chaired and Moderated by Freddie G. Peleo, MD., FPCCP.

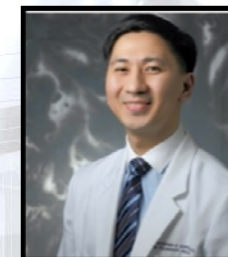
At the end of the session, the participant should be able to:

1. Discuss predictors of peri-operative pulmonary risk before non-cardiothoracic surgery;
2. Discuss strategies to reduce peri-operative pulmonary risk (eg. Atelectasis, pneumonia, respiratory failure); and
3. Given clinical cases, formulate risk stratification evaluation and give peri-operative recommendations.

SPEAKERS' PROFILE

CHRISTOPHER P. CORTES, MD., FPCCP.

Consultant Staff,
 Philippine Heart Center
 Chinese General Hospital & Medical Center
 Metro North Medical Center & Hospital
 Member, Council on Critical Care and PVD
 Member, Diagnostics and Therapeutics Council
 Philippine College of Chest Physicians
 Member, World Association of Bronchology & Interventional Pulmonology (WABIP)



JULIUS CAESAR J. DALUPANG, MD., FPCCP.

Faculty, Bronchoscopy International
 Regent, World Association for Bronchology and Interventional Pulmonology
 Clinical Associate Professor,
 UST Faculty of Medicine and Surgery
 Head, Interventional Pulmonology Unit, Center for Respiratory Medicine, UST Hospital



EDMUND V. VILLAROMAN, MD., DPBS., FPATACSI.

Head, Thoracic Section, Institute of Pulmonary Medicine
 St. Luke's Medical Center Quezon City
 Board of Directors,
 Philippine Association of Minimally Invasive Thoracic Surgery
 Past President,
 Philippine Association of Thoracic and CardioVascular Surgeons



MA. JANETH T. SAMSON, MD., FPCCP.

Training Officer, Institute of Pulmonary Medicine
 St. Luke's Medical Center Quezon City
 Chairman, Diagnostics and Therapeutics Council,
 Philippine College of Chest Physicians



SPEAKERS' PROFILE

AVEN-KERR S. UBALDE, MD, FPCCP

Clinical Professor – San Beda College of Medicine (Department of Internal Medicine and Physiology)
 Fellowship in Respiratory Endoscopy
 National Cancer Center Hospital Tokyo, Japan
 Fellowship in Pulmonary Medicine
 UP-Philippine General Hospital
 Member, TB and Lung Cancer Councils
 Philippine College of Chest Physicians



ARIEL A. BOONGALING, MD.

Head of Pulmonary Unit, Sta. Rosa Hospital and Medical Center
 Unihealth Southwoods Hospital and Medical Center
 Assistant Professor 1 -- College of Medicine
 University of Perpetual Help Dr Jose G Tamayo Medical Center (UPHDJGTMC)

FRANCISCO P. TRANQUILINO, MD., FPCP.

Special Assistant to the Dean & College Secretary and Associate Professor 3, UP College of Medicine
 Regent, Philippine College of Physicians (PCP)
 Member, Asia Pacific Economic Cooperation (APEC) Expert Working Group on Business Ethics in the Biopharmaceutical Sector (The Mexico City Principles)
 Philippine Representative to the International Federation of Pharmaceutical Manufacturers and Associations (IFPMA) - Code Compliance Network (CCN), Geneva Expert Consultant, Ethics Committee, Pharmaceutical & Healthcare Association of the Philippines (PHAP)



PROGRAM DETAILS

CPET INTERPRETATION

May N. Agno, MD., FPCCP.

Chaired and Moderated by Geraldine G. Garcia, MD., FPCCP.

At the end of the session, the participant should be able to:

1. Understand the exercise physiology and principles behind CPET;
2. List the indications and contraindications of CPET;
3. Describe the practical way of conducting the test; and
4. Interpret results relevant to pulmonary practice including its use in pre-operative pulmonary assessment.

NON-INVASIVE VENTILATION TROUBLESHOOTING

Newell R. Nacpil, MD., FPCCP.

Chaired and Moderated by Evelyn Victoria Reside, MD., FPCCP.

At the end of the session, the participant should be able to:

1. Demonstrate an understanding of the principles of non-invasive ventilation and discuss application of theory to practice;
2. State the suggested initial settings for non-invasive mechanical ventilation; and
3. Properly monitor the patient and ventilator interface to include setting/troubleshooting for alarms and clinical parameters.

SLEEP STUDY INTERPRETATION

Virginia S. Delos Reyes, MD., FPCCP.

Chaired and Moderated by Gloria Giselle F. Pattaguan, MD., FPCCP.

At the end of the session, the participant should be able to:

1. Discuss the preparation of patient and equipment for sleep monitoring;
2. Recognize sleep stage and abnormal events recorded on the polysomnogram;
3. Discuss positive pressure treatment of sleep related breathing disorders; and
4. Interpret polysomnogram reports.

GENERAL PULMONOLOGY TRACK

Session 3

07 August 2014

9:45am to 10:30am

Ballroom A

Level 4

Crowne Plaza Manila

Galleria

GENERAL PULMONOLOGY TRACK

Session 4

07 August 2014

9:45am to 10:30am

Ballroom B

Level 4

Crowne Plaza Manila

Galleria

GENERAL PULMONOLOGY TRACK

Session 5

07 August 2014

10:30am to 11:15am

Ballroom A

Level 4

Crowne Plaza Manila

Galleria

PROGRAM DETAILS

GENERAL
PULMONOLOGY
TRACK
07 August 2014

Chaired by Virginia S. Delos Reyes, MD., FPCCP.
Adviser: Benilda B. Galvez, MD., FPCCP.

Case-based interactive sessions
Fifteen-minute review of basic principles at the start of each session, followed by a 30-minute presentation of cases and clinical scenarios, interpretation of results and open forum.
Interactive keypads will be provided to participants.

GENERAL
PULMONOLOGY
TRACK
Session 1
07 August 2014
9:00am to 9:45am
Ballroom A
Level 4
Crowne Plaza Manila
Galleria

SPIROMETRY, LUNG VOLUMES, DLCO, AIRWAY
RESISTANCE, MVV INTERPRETATION
Celeste Mae S. Campomanes, MD., FPCCP.

Chaired and Moderated by Geraldine G. Garcia, MD., FPCCP.

At the end of the session, the participant should be able to:

1. Specify the indications for pulmonary function testing;
2. Describe how the following pulmonary function tests are performed:
 - A. Lung volumes C. Airway resistance
 - B. DLCO D. MVV
3. Understand interpretation and clinical implications of pulmonary function testing results, including differential diagnoses.

GENERAL
PULMONOLOGY
TRACK
Session 2
07 August 2014
9:00am to 9:45am
Ballroom B
Level 4
Crowne Plaza Manila
Galleria

VENTILATOR WAVEFORMS INTERPRETATION
John Clifford E. Aranas, MD., FPCCP.

Chaired and Moderated by Evelyn Victoria Reside, MD., FPCCP.

At the end of the session, the participant should be able to:

1. Identify the components of ventilator waveforms;
2. Recognize abnormal scalar and loop waveforms and their clinical significance; and
3. Apply knowledge of ventilator waveform interpretation to optimize ventilator management.

PROGRAM DETAILS

THE 11TH PCCP INTER-HOSPITAL ENGAGEMENT:
PULMONARY AND CRITICAL CARE DEBATE
Issue:

Among breast cancer patients with recurrent pleural effusion, what is the better approach to ensure quality of life?

Background Setting:
Recurrent pleural effusion among breast cancer patients significantly compromise quality of life. Continuous pleural drainage (long term indwelling catheter) versus intercostal tube drainage with pleurodesis are among the options being offered to these patients. However, the timeliness, practicality (overall long term cost), success rates, complications, morbidity and overall effectiveness of these interventions providing quality of care to patients remain controversial based on competing studies on long term benefit and outcome.

PRO: Continuous pleural drainage (longterm indwelling catheter) is the better approach.

Jillian Mae L. Tabora, MD (*Makati Medical Center*)
Hanna Candace C. Sumalinog, MD (*Perpetual Succour Hospital*)
Rossini Abbie R. Pasanting-Lim, MD (*Chong Hua Hospital*)
Esperanza Marie I. Ramirez, MD (*The Medical City*)

CON: Intercostal tube drainage with pleurodesis is the better approach.

Cheryl T. Uy, MD (*St. Luke's Medical Center*)
Charlotte Kay Laurel, MD (*Chinese General Hospital*)
Caroline M. Armas, MD (*University of Santo Tomas Hospital*)

JUDGES: Jennifer Sandoval-Tan, MD (*Med Onco*)
Rodolfo S. Pagcatipunan Jr, MD, FPCCP (*Pulmonologist*)
Lomenardo Ramos, MD (*TCVS*)

HOST TEAM: Gene Philip Louie C. Ambrocio, MD (UP-PGH)
Katrina Gadia, MD (MDH)
Subhash Yadav, MD (UPHDMC)

DOCUMENTATION: James Albert A. Flores, MD (PHC)
Ian Villamor, MD (LCP)
Rei Paolo L. Diaz, MD (VMMC)

Day 1
06 August 2014
7:30am
Ballroom C, D & E
Crowne Plaza Manila
Galleria

SESSION CHAIRED
by Lalaine L.
Mortera, MD.,
FPCCP.
And
CO-CHAIRLED by
Julie Christie G.
Visperas, MD.,
FPCCP.

SESSION
MODERATED by
Gian Carlo T.
Arandia, MD.,
FPCCP.

PROGRAM DETAILS

Day 1
06 August 2014
9:30am
Ballroom A & B
Crowne Plaza Manila
Galleria

OPENING CEREMONIES
INDUCTION OF NEW MEMBERS

KEYNOTE LECTURE
JOSE Y. CUETO, JR., MD., MHPED
"Is the Health Care Sector Ready for ASEAN Integration in 2015?"

10:45am

OPENING OF EXHIBITS

PLENARY
SESSION 1
06 August 2014
11:00am to 11:45am
Ballroom A & B
Crowne Plaza Manila
Galleria

TOBACCO CONTROL IN THE ASIA PACIFIC:
Are We Winning the Battle?
Dr. Carmen Audera-Lopez
Team Leader, Tobacco Free Initiative
World Health Organization, Western Pacific Regional Office

Chaired by Imelda M. Mateo, MD., FPCCP.

At the end of the session, the participant should:

1. Be aware of the present status of tobacco control in the Asia-Pacific region
2. Know the success and hindering factors in tobacco control that may be unique in the region.

LUNCHEON
SYMPOSIUM 1
06 August 2014
12:00pm to 1:30pm
Ballroom A
Crowne Plaza Manila
Galleria

DYNAMICS OF OAD MANAGEMENT: A NEW TWIST TO FIXED
DOSE ICS-LABA INHALER THERAPY
Camilo C. Roa Jr., MD., FPCCP.
Aileen S. David-Wang, MD., FPCCP.

Through a grant sponsored by **Cathay Drug**

LUNCHEON
SYMPOSIUM 2
06 August 2014
12:00pm to 1:30pm
Ballroom B
Crowne Plaza Manila
Galleria

GLYCOPYRRONIUM BROMIDE IN COPD AIRWAYS
Teresita S. de Guia, MD., FPCCP.
Tim S. Trinidad, MD., FPCCP.

Through a grant sponsored by **Novartis Pharmaceuticals**

PROGRAM DETAILS

POST-TB BRONCHIECTASIS IN FOCUS

Chaired by Romulo T. Uy, MD., FPCCP.
Moderated by Iris Ruth O. Batalla, MD., FPCCP.

3:20pm to
3:50pm

Is Effective Medical Management Possible?
Vincent M. Balanag, Jr., MD., FPCCP.
At the end of the session, the participant should:

1. Be aware of current medical management of post-TB bronchiectasis with due appreciation of their potential benefits and limitations ;
2. Be able to examine the evidence behind bronchodilator use in post-TB bronchiectasis; and
3. Appreciate the outcomes that may be affected by maintenance bronchodilator treatment.

3:50pm to
4:20pm

Outcomes of Interventional Radiology for
Hemoptysis
Orlando Ignacio, MD., FPCR.
At the end of the session, the participant should:

1. Appreciate the role of interventional radiology in hemoptysis; and
2. Be aware of the evidence and outcomes behind this intervention.

4:20 to
4:30pm

Open Forum

ADVANCES IN LUNG CANCER TREATMENT
Kazuhisa Takahashi, MD., PhD.
Professor and Chairman
Department of Respiratory Medicine
Juntendo University Graduate School of Medicine
Tokyo, Japan

Chaired by Windfield Tan, MD., FPCCP.

At the end of the session, the participant should:

1. Be aware of the 2013 updates in lung cancer management; and
2. Know the current challenges in applying these guidelines to the region.

CONVENTION
SYMPOSIUM 6

06 August 2014
3:20pm to 4:30pm
Ballroom C, D & E
Level 4
Crowne Plaza Manila
Galleria

PLENARY
SESSION 2
06 August 2014
4:40pm to 5:15pm
Ballroom A & B
Level 4
Crowne Plaza Manila
Galleria

PROGRAM DETAILS

CONVENTION SYMPOSIUM 4
(continued)
06 August 2014
3:20pm to 4:30pm
Ballroom A
Level 4
Crowne Plaza Manila
Galleria

4:00pm to
4:20pm

"Reality-Based" Management in Asthma
Manuel C. Jorge, II, MD., FPCCP.
At the end of the session, the participant should:

1. Be aware of how principles of management of chronic illnesses could be employed in the management of asthma especially in a resource-limited setting; and
2. Know diagnostic techniques and treatment strategies that may be employed to manage asthma in a low income setting.

4:20pm to
4:30pm

Open Forum

CONVENTION SYMPOSIUM 5
06 August 2014
3:20pm to 4:30pm
Ballroom B
Level 4
Crowne Plaza Manila
Galleria

COPD: NOVEL CONCEPTS AND PROMISING NEW DRUGS

Chaired by Gerard S. Garcia, MD., FPCCP.
Moderated by Ma. Philina B. Pablo-Villamor, MD., FPCCP.

3:20pm to
3:40pm

Molecular Insights into COPD
A/Prof Nilda M. Munoz, MSc.
At the end of the session, the participant should:

1. Be informed of current molecular knowledge on COPD;
2. Appreciate how these molecule-based knowledge may aid in the management of stable COPD and possible exacerbations.

3:40pm to
4:00pm

New Treatment = Better Outcome?
Tim S. Trinidad, MD., PCCP.
At the end of the session, the participant should:

1. Appreciate the evidence behind new and novel COPD treatment; and
2. Acknowledge how these "new" modalities fit into currently acceptable guidelines.

*Through a grant sponsored by **Nycomed**, a Takeda Company

4:00 to
4:20pm

Updates on Smoking Cessation Guidelines
Imelda M. Mateo, MD., FPCCP.
At the end of the session, the participant should:

1. Know current updates in terms of smoking cessation;
2. Acknowledge the regional factors that may make the application of these guidelines challenging.

4:20 to
4:30pm

Open Forum

PROGRAM DETAILS

ANTIBIOTIC RESISTANCE IN FOCUS
Jaime C. Montoya, MD., FPSMID.
Lenora C. Fernandez, MD., FPCCP.

Through a grant sponsored by **Takeda**

REGIONAL ISSUES IN TB CONTROL

Chaired by Joanne T. Apdol, MD., FPCCP.
Moderated by May Grace A. Miravalles, MD., FPCCP.

2:00pm to
2:20pm

Is TB Elimination in Sight?
Nobuyuki Nishikiori, MD., PhD.
At the end of the session, the participant should:

1. Know the present status of TB control in the Asia-Pacific region;
2. Know current challenges in the eradication of TB from both the public health and clinical points of view; and
3. Know currently employed and planned strategies for TB eradication in the Asia-Pacific region.

2:20pm to
2:40pm

Post-2015 Global TB Strategy
Nobuyuki Nishikiori, MD., PhD.
At the end of the session, the participant should:

1. Know the challenges of the application of the DOTS strategy from its inception up to the current time; and
2. Be aware of possible models or interventions aside from DOTS that may show potential in TB control highlighting their features and possible limitations.

2:40 to
3:00pm

Patient-Centred Approach in MDR-TB Care
Tauhidul A.B.M. Islam, MBBS, MPH.
At the end of the session, the participant should:

1. Know the current status of drug resistance of TB; and
2. Be aware of possible upcoming pharmacologic therapy and regimen for MDR-TB and their performance.

3:00 to
3:20pm

Open Forum

LUNCHEON SYMPOSIUM 3
06 August 2014
12:00pm to 1:30pm
Ballroom C, D & E
Crowne Plaza Manila
Galleria

CONVENTION SYMPOSIUM 1
06 August 2014
2:00pm to 3:20pm
Ballroom A
Level 4
Crowne Plaza Manila
Galleria

PROGRAM DETAILS

CONVENTION SYMPOSIUM 2
06 August 2014
2:00pm to 3:20pm
Ballroom B
Level 4
Crowne Plaza Manila
Galleria

PNEUMONIA MANAGEMENT STRATEGIES HYPE OR REAL?

Chaired by Fel Angelie P. Colon, MD., FPCCP.
Moderated by Tomasito R. Sy, MD., FPCCP.

2:00pm to
2:20pm

New Drugs for Old Bugs? Jaime C. Montoya, MD., FPSMID.

At the end of the session, the participant should:

1. Acknowledge the current patterns of antibiotic utilization of physicians and drug susceptibility for common pathogens in pneumonia in the Asia-Pacific region; and
2. Be aware of the need for possible new drugs for pneumonia and appreciate the value of antibiotic stewardship principles.

*Through a grant sponsored by Westmont Pharmaceuticals, Inc.

2:20pm to
2:40pm

Strategies Beyond Antibiotics: Impact on Mortality Albert L. Rafanan, MD., PCCP.

At the end of the session, the participant should:

1. Be aware of the potential benefits of non-pharmacologic treatment strategies for pneumonia and sepsis.

2:40 to
3:00pm

Pneumonia Vaccines: Promise Fulfilled? Regina P. Berba, MD., FPSMID.

At the end of the session, the participant should:

1. Know the quality of current evidence-based guidelines on immunization; and
2. Appreciate the performance of pneumonia vaccines in terms of hard clinical outcomes such as preventing deaths and hospitalizations.

3:00 to
3:20pm

Open Forum

NEGLECTED RESPIRATORY DISEASES IN THE ASIA-PACIFIC REGION

Chaired by Veyda Christine M. Bringas, MD., FPCCP.
Moderated by Leandro M. Masanga, Jr., MD., FPCCP.

2:00pm to
2:30pm

Parasites and the Lungs Vicente Y. Belizario, MD., MTM&H.

At the end of the session, the participant should:

1. Know how to recognize common parasitic infections of the lungs; and
2. Be informed of the basic principles of preventing and managing parasitic infections of the lungs.

2:30pm to
3:00pm

Farmers' Lung Abundio A. Balgos, MD., FPCCP.

At the end of the session, the participant should:

1. Know pertinent epidemiologic data regarding Farmers' Lung;
2. Know how to recognize Farmers' Lung; and
3. Know the management principles of Farmers' Lung.

3:00 to
3:20pm

Open Forum

EMERGING CRITICAL ISSUES IN ASTHMA

Chaired by Richmond B. Ceniza, MD., FPCCP.
Moderated by Corona S. Sena, MD.

3:20pm to
3:40pm

The Promise of New and Novel Drugs A/Prof Pyng Lee

At the end of the session, the participant should:

1. Be updated on novel approaches in the treatment of asthma and upcoming molecules in the pipeline for the treatment of asthma.

3:40pm to
4:00pm

Utility of Clinical Pathways Ricardo C. Zotomayor, MD., FPCCP.

At the end of the session, the participant should:

1. Know how clinical pathways may improve the management of patients with asthma highlighting approaches that may be feasible in the region.

PROGRAM DETAILS

CONVENTION SYMPOSIUM 3
06 August 2014
2:00pm to 3:20pm
Ballroom C, D & E
Level 4
Crowne Plaza Manila
Galleria

CONVENTION SYMPOSIUM 4
06 August 2014
3:20pm to 4:30pm
Ballroom A
Level 4
Crowne Plaza Manila
Galleria